



CONTATTO WI-FI

P06809 - Rev. 1

1. TECHNICAL FEATURES

- Equipment used to turning alarm systems, electric fence energizers or automatic gate openers able to communicate to a cell phone via Wi-Fi, making them more sophisticated and compatible with apps for Android and iOS cell phones;
- It sends status notifications of your control panel on your cell phone via app (Android / iOS);
- It can be used to control your alarm system, automatic gate opener or electric fence energizer from wherever you are via app;
- Setup via App;
- 1 relay output;
- It works with Wi-Fi technology;
- It is compatible with most alarm systems, automatic gate openers and electric fence energizers.

2. CONNECTIONS

1 – MAIN CONNECTOR:

In the topic 2.1, you will find how to connect the cables of the main connector according to the product Contatto Wi-Fi will be connected to.

2 – LED (LD1):

Blinking: Not connected to the Internet.
Lit: Connected to the Internet.

3 – BUTTON (SW1): When kept pressed, it resets all the configurations of the Contatto Wi-Fi to the factory default settings.

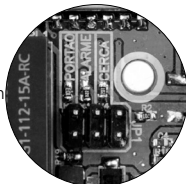
4 – AUXILIARY RELAY: In the topic 2.1, you will find how to connect the cables of the main connector according to the product Contatto Wi-Fi will be connected to.

5 – WI-FI MODULE

6 – JUMPER FOR APPLICATION CONFIGURATION (JPI JUMPER):

Select the use application of Contatto Wi-Fi. In order to select the model, you need only to place the jumper accordingly and leave the other jumper pins open.

- "Portão (Gate)" Position: Contatto Wi-Fi is being installed in a control unit of a gate opener.
- "Alarme (Alarm System)" Position: Contatto Wi-Fi is being used in an Alarm System Control Panel.
- "Cerca (Fence Energizer)" Position: Contatto Wi-Fi is being installed in a Fence Energizer



Control Panel.
Below you can see the charts which show the connection of the cables of Contatto Wi-Fi for each mode of use of the product; Gate opener, Fence Energizer and Alarm System modes.

2.1 GATE OPENER MODE

CONTATTO WI-FI WIRES	USE
Red	12V
Black	GND (the same from the control unit of the gate opener)
Orange	GND Signal for 0.5 second to activate the pushbutton of the control unit of the gate opener
White	Input connected to the limit switch of the gate GND: Gate closed +: Gate open
Blue	No function
Gray	Normally closed (NC) of the auxiliary relay
Yellow	Common of the auxiliary relay
Green	Normally open (NO) of the auxiliary relay

2.2 FENCE ENERGIZER MODE

CONTATTO WI-FI WIRES	USE
Red	12V
Black	GND (the same from the Electric Fence Energizer)
Orange	No function
White	Input connected to the output of the Control Unit, which identifies "armed" and "disarmed" status (Connect with a 1K resistor for the GND). GND: Armed +: Disarmed
Blue	Input connected to the positive of the siren, responsible for identifying when the fence is triggered
Gray	Normally closed (NC) of the auxiliary relay
Yellow	Common of the auxiliary relay; it must be connected to several terminals of the activation key
Green	Normally open (NO) of the auxiliary relay, it must be connected to one of the terminals of the activation key

2.3 ALARM SYSTEM MODE

CONTATTO WI-FI WIRES	USE
Red	12V
Black	GND (the same from the alarm panel)
Orange	No function
White	Input connected to the output of the Alarm Panel, which identifies "armed" and "disarmed" status (Connect with a 1K resistor for the GND). GND: Armed +: Disarmed
Blue	Input connected to the positive of the siren, responsible for identifying when the alarm is triggered (Connect with a 1K resistor for the GND).
Gray	Normally closed (NC) of the auxiliary relay, connected to the input of the alarm panel responsible for changing the status of the panel between armed and disarmed, configurable output of the Contatto Wi-Fi - "Retention" (Hold a button) or "Pulse" (Press button)
Yellow	Common of the auxiliary relay, if the alarm system is activated by the GND signal, connect the wire to the GND, if the alarm system is activated by the "+" signal, connect the wire to the "+"
Green	Normally open (NO) of the auxiliary relay

3. INTRODUCING THE APP

1st Step: Download the application "Contatto" from your cellphone app store.



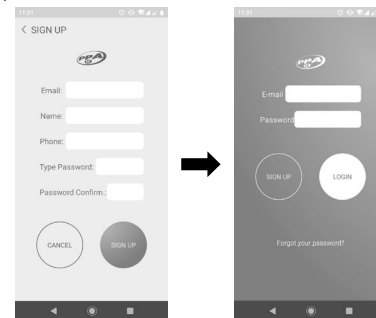
Android (Google) Operational System
Play Store



iOS (Apple) Operational System
AppStore

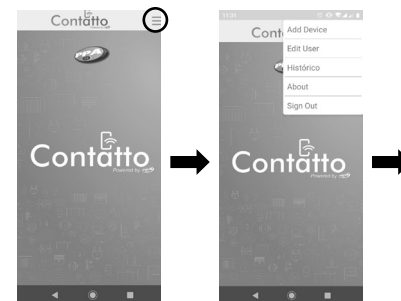
IMPORTANT: The app is only available to the Operational systems described above.

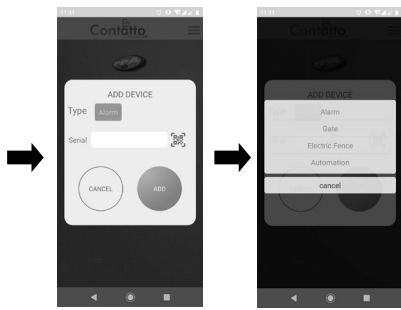
2nd step: When using the app for the first time, it is necessary to register with some basic information, such as an e-mail account, name, cell phone number and the creation of a code (password). From the second time one uses the app on, their e-mail account and code (password) will have already been saved. The following images depict the procedure:



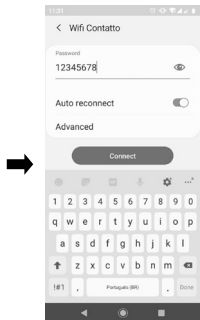
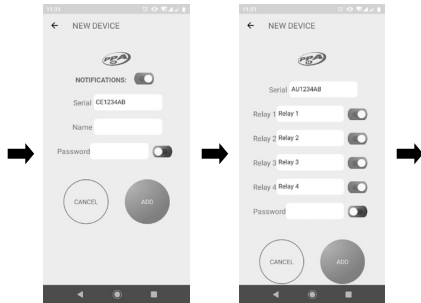
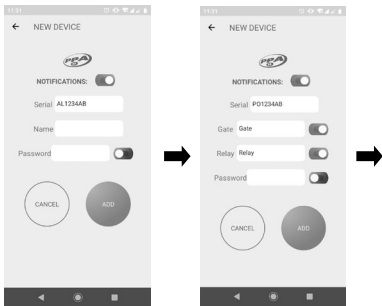
3rd Step: After registering, one can already login to the account that has just been created.

4th Step: From the main (Home) Screen, the next step is to register the device. In order to do so, one can just press the Menu (☰), button. Then, one can select the option "Add Device", and then select "Alarm" for Alarm system, "Gate" for Gate opener, "Electric Fence" for Fence Energizer or "Automation", type "123ABC" in the "Serial" field or point the QR Code Scanner of one's cell phone so that the product can search automatic identification; afterwards, click the "Add" Button. The following images depict the procedure:

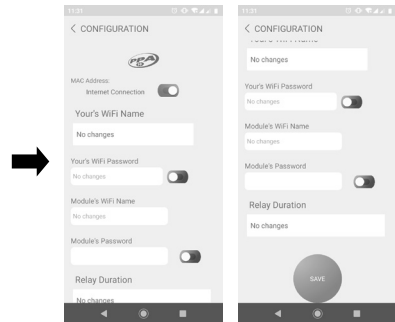
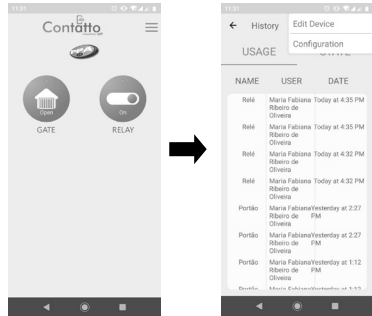




5th Step: At this point, a screen with information appears; one must type "12345678" in the "Password" Field and click the "Add" Button. Then, a WiFi Network called "Wifi Contatto" appears. One must close the application and connect to the "Wifi Contatto" Network by using the password "12345678".



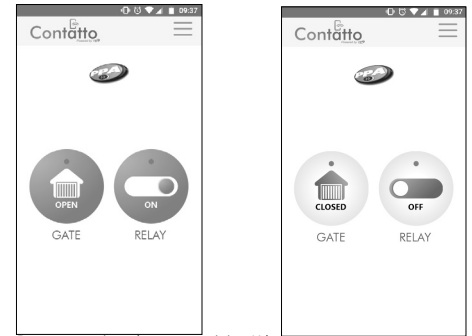
6th Step: Open the application again, keep the button "Portão (Gate)" open until the "Histórico (History)" screen appears. Click on the Menu button (☰) on the right upper corner, and choose the option "Configuration". Type the data and the password of the WiFi Network available at the place where the product is being installed and click "Save" Button. Type the available WiFi Network in the "Your's WiFi Name" field and the password in the "Your's WiFi Password" field. Type the time one wants the relay to remain activated in the "Relay Duration" field. If one chooses the "Pulse (Press Button)" mode, the time is zero; if one chooses the "Retention (Hold Button)" mode, one must select the option "On/Off (∞ duration)".



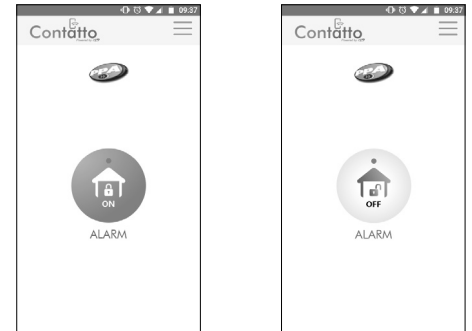
7th Step: Disconnect from the "WifiContatto" Network and connect to the available WiFi Network. At this point, one must open the application again and check if there is a green dot on the upper part of the "Portão (Gate)" Button, "Cerca (Energizer)" Button or "Alarme (Alarm System)" Button. If so, the product is ready to operate normally.

See on the next page the final screens of each application, after everything is properly installed and ready to be used:

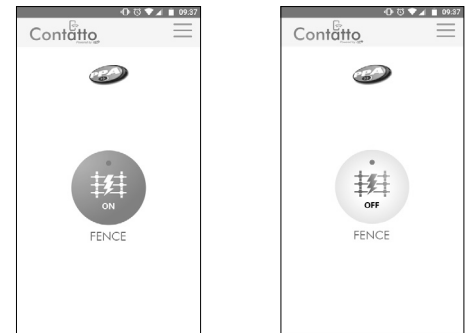
Demonstrating the app activity (Gate Opener Mode)



Demonstrating the app activity (Alarm System Mode)



Demonstrating the app activity (Fence Energizer Mode)



4. RESET (STANDARD FACTORY SETTINGS)

In order to reset the settings of the Contatto Wi-Fi to the Factory ones, press the "SW1" button and keep it pressed for at least one second. In order to find the button on the board, check the Item "2. CONNECTIONS", sub-item number 3 - BUTTON (SW1).